

The New AP10-2 Electro-Acoustic Preamp

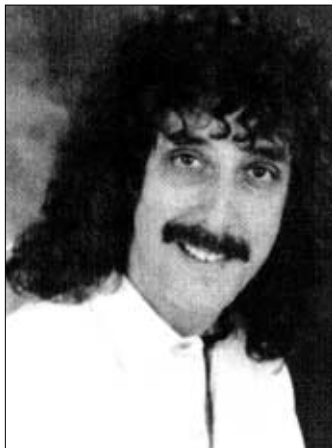
The AP10 concept was initially launched by Award-Session in 1995 and was called the GG10 in Europe, after Gordon Giltrap who adopted the unit as his! He still uses them to this day. However, we have re-named it the AP10, as this was it's better known name in USA when made for MORLEY, the wah & volume pedal company.

This is a great tool for live performance, whose range of useful features are unmatched by any other electro-acoustic pre-amp available. A great deal of thought went into designing the AP10 and has been hailed as one of the best ever electro-acoustic preamps.

Although designed for acoustic guitars, we have learned of many musicians using them with mandolins, violins, double basses and a whole host of ethnic stringed acoustic instruments fitted with transducers. So, it appears as if it's usefulness is only limited by the users imagination!

Of course, you can use it for direct recording acoustic instruments too. AP10 is quite a sophisticated piece of kit which will enable you to create all sorts of quality acoustic rhythm and solo tracks.

Gordon is one of Britain best acoustic soloists. Follow his example. Hear it in action on his latest CDs. For more information on Gordon Giltrap, go to: www.giltrap.co.uk



Gordon Giltrap

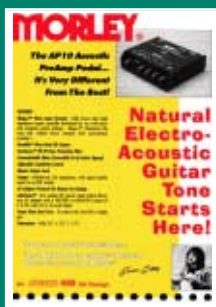
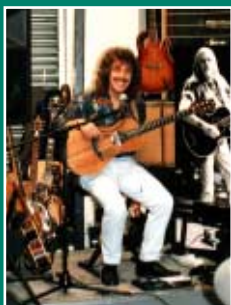
GG10/AP10 History File

GG10, as it was known, was a descendent from the MatchBox (MB11 - Pic' right) direct box specially created for electro-acoustic guitars. There were three available for electric guitar, electric bass and acoustic guitar (MB10, 11 & 12).

Gordon initially used the MB11, which he still has, but it was thought that the other features we could offer would make it a much more exciting and useful product... which time showed to be the right decision. Many were sold all over Europe and America.

Around the late 1990s, multi-FX units became available for electro-acoustic instruments and made the GG10 seem a little 'lack-lustre' by comparison, so we stopped making it. Throughout the time it was off the market, we received a steady stream of enquiries from musicians. Now, of course, the fashion has swung back to analogue

gear. With this, we decided to re-introduce the GG10 back onto the market under the guise of AP10.



AP10 Into A PA System: AP10-2 has been designed primarily for use with PA and any other 'flat response' amplification like keyboard combos, direct recording or hifi amps.

AP10 Into A Guitar Amp: AP10 works very well when plugged into the 'Line In' input found on many electric guitar amplifiers. By connecting AP10 at this point, the preamp inside the guitar amp is bypassed, thereby, side-stepping the 'voicing' which has been designed to enhance electric guitars (not acoustic guitars). AP10 then acts as the preamp and provides a quite natural tone to emanate from the guitar amp, even though it is fitted with guitar speakers.

Three Band Passive EQ: The three band NearMic™ passive EQ gives a natural warm, rich tone which has been designed to remove much of the harsh percussive tones normally associated with electro-acoustic guitars fitted with under-saddle transducers.

Tuner Output/Signal Through: AP10's full-time buffered TUNER OUT is provided because so many guitar tuners have an input impedance too low for piezo transducers, resultantly, this can spoil the tone of the guitar.

This output can also be used as a buffered signal through. In this mode, the preamp acts merely as an ultra-high to low impedance converter, without any tonal changes what-so-ever. All the other functions of the preamp are unavailable.

HornSaver Filter: HornSaver™ is a selectable filter designed to remove hi-end strumming transients which can cause damage to HF horns in PA systems. It has nothing to do with male potency preservation after consuming a skin-full of booze.... sadly!

Mute/Bypass Footswitch: The MUTE function is situated post TUNER OUT to enable silent

instrument changes or tuning, without waving or calling to the sound engineer to drop the faders!

When AP10 leaves our workshops, the footswitch is set for MUTE function. This can be altered to a BYPASS switch for those who need to quickly remove AP10 from the signal path.

TruTone Bypass Circuitry: The TruTone circuitry automatically comes into action when AP10 has had it's footswitch function converted to BYPASS. This ensures the instrument always 'sees' the correct input impedance and prevents any effects connected after the AP10 from corrupting the guitar's natural tone.

XLR Or Jack Output: The AP10 Acoustic preamp now has an XLR output in addition to the jack output. Both can be used simultaneously if required. The signal quality at both outputs is of identical quality. The XLR output is provided purely for convenience in connecting AP10 to stage boxes.

AutoSense Allows Use Of Most AC Adapters: AP10 runs from a 9V battery or virtually any 9 to 16 volt AC Adapter giving a positive or negative voltage polarity (not supplied). Thanks to its clever AutoSense circuit, it automatically sets the correct voltage polarity, so NO harm can be done by use of an incorrect adapter - GUARANTEED.

All Steel Construction: AP10 is built into a solidly constructed steel case to withstand the hard life it will receive over many years of use. We have known a fork lift truck to drive over one and the PCB survived to work. It just needed a simple 'pot' replacement and new case (naturally).

We are always happy to service older units when required. It takes about seven working days to turn them around. Parts are plentiful too.

Available Direct @ £99 + £6.50 carriage.

Try it at home for up to 14 days and simply send it back for a refund if it's not your cup of tea! No hassles or questions asked.

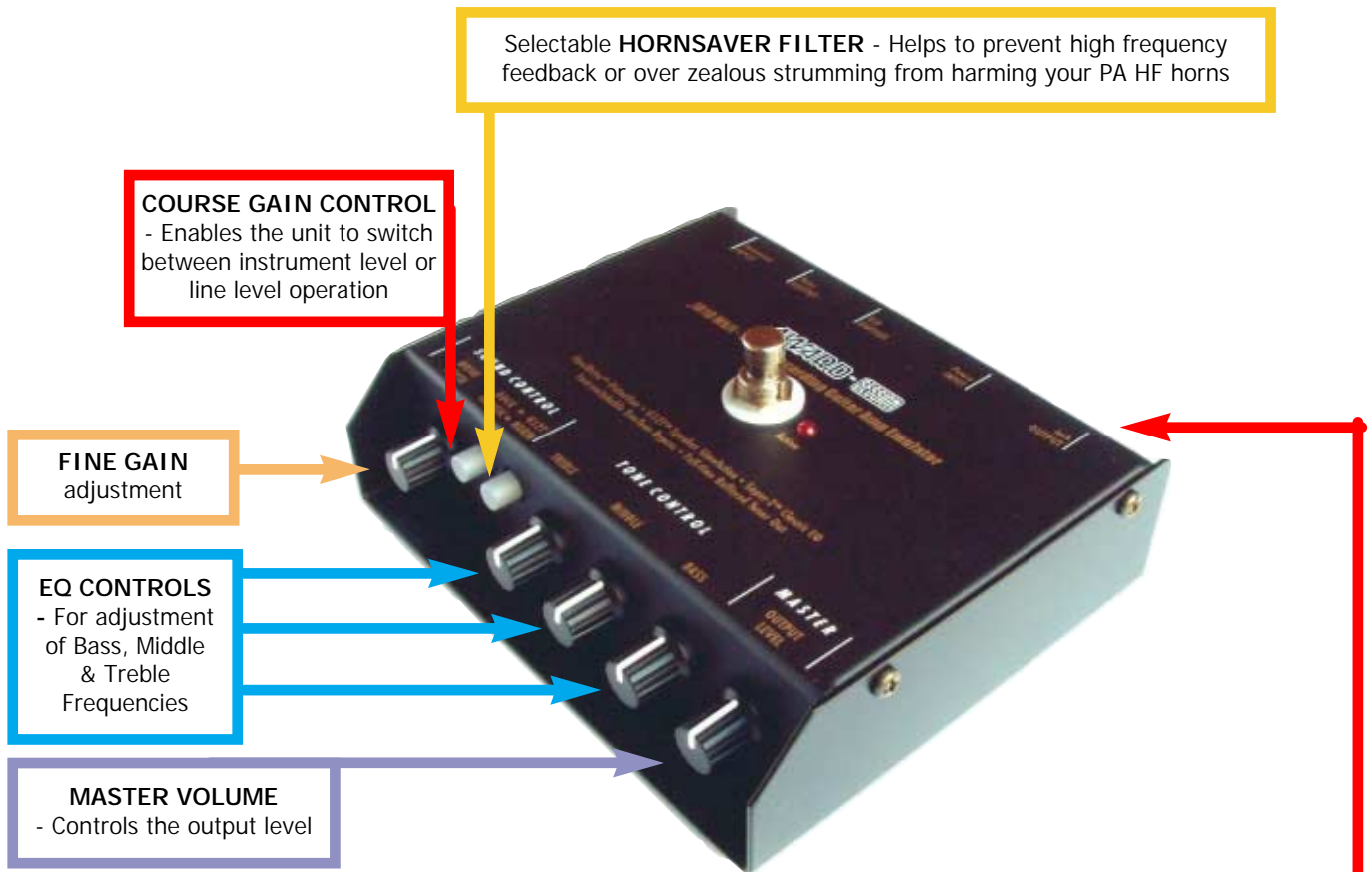
Call: 01256 477 222 to order

www.award-session.com

AWARD - SESSION

AWARD - SESSION

Getting the best from the AP10 Electro-Acoustic Preamp



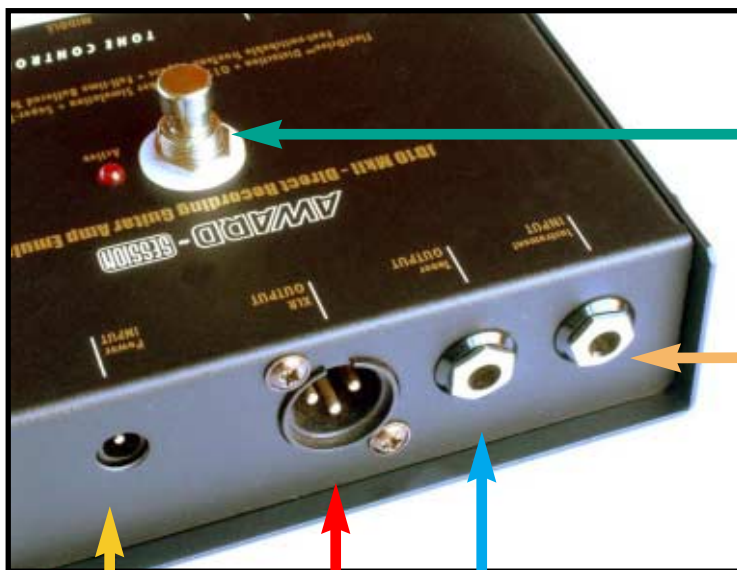
Selectable **HORNSAVER FILTER** - Helps to prevent high frequency feedback or over zealous strumming from harming your PA HF horns

COURSE GAIN CONTROL
- Enables the unit to switch between instrument level or line level operation

FINE GAIN
adjustment

EQ CONTROLS
- For adjustment of Bass, Middle & Treble Frequencies

MASTER VOLUME
- Controls the output level



MUTE - A handy footswitch to silence the signal going to the PA system whilst changing instruments or re-tuning.
Can be converted to a **BYPASS** switch, internally.

INSTRUMENT INPUT - Ultra high impedance to suit ANY known type of pickup or transducer

TUNER OUT - A buffered signal to drive guitar tuners, which eliminates possible tone degradation

AP10 runs on virtually ANY AC adapter from 9-16VDC positive or negative polarity.
Our unique AutoSense circuitry ensures no harm will be done. A battery can be used too

AP10 is now fitted with an XLR output too... both jack and XLR can be used simultaneously!